



Resident Questionnaires

Goal of the Questionnaires

- We want to measure the impact COPD is having on the wellbeing and daily life of the resident.
- We want to help improve the management of COPD and get the greatest benefit from treatment by measuring a change in score.

Qualities of the Questionnaires

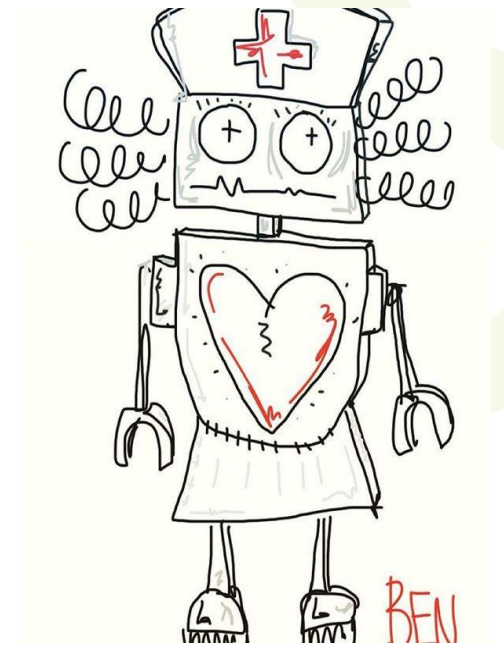
- CAT (COPD Assessment Tool) is simple and fast (5 to 8 minutes)
- CRQ (Chronic Respiratory Questionnaire) is longer but includes four domains affected by COPD (18 minutes). They can be looked at individually. Dyspnea, fatigue, emotional, mastery.
- They are sensitive so it can be repeated in a reasonable window of time. CAT : 2-3 months, CRQ: 2 weeks.
- Both require a face to face interview or self completion of questionnaire without help.
- A face to Face interview gives a better assurance that all the questions are answered and that no one helps or influence the resident.

How to administer the questionnaire-1

- Need a quiet area free of distraction. Ideally sitting next to the resident at a desk. Give a sense of privacy
- Explain to the resident why they are doing the questionnaire.
- Ask the resident to answer as honestly as they can. –“there is no right or wrong answer, just the answer what best apply to you.”
- Explain that you cannot answer any questions or help. You can only read the question again.
- These questionnaires are design to obtain the opinion of the resident about his/her health. The interviewer should not influence the resident’s response.

How to administer the questionnaire-2

- Ask the questions exactly as they are worded in the questionnaire in the order that they are specified.
- Never help the resident come up with an answer. He/she will look up for your approval, sympathy or empathy.
- Do not nod or make feedback sound.
- Be neutral in your facial expression.
- Explain again that you don't want to be impolite this is just how it has to be done. –"I am a robot for the duration of the questionnaire."



Use of a surrogate to answer the questionnaire

If the resident cannot answer the CAT questionnaire

- We understand that within the target population there is a significant amount of resident suffering from cognitive impairment. (65% in LTC)
- When possible nursing can objectively complete the questionnaire for the resident based on observation.
- The questionnaire will be identified as answered by a surrogate.

Thank you for taking the time to learn more
about COPD questionnaire

Questions???

Acknowledgements



It takes a community to fix COPD